

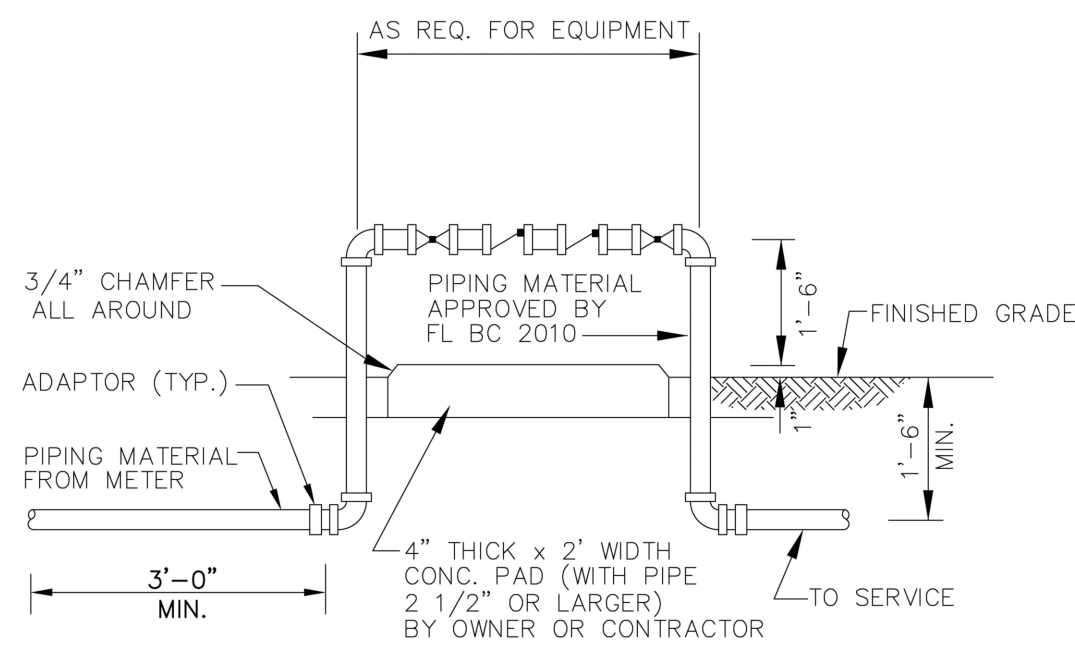
Revisions:

OWNER / DEVELOPER:
**RED LINK MANAGEMENT
CORP**
2750 NE 185TH ST. #304
AVENTURA, FLORIDA 33180PROJECT:
**FOLIO 4942-03-27-0012
PROPOSED SHELL BLDG @
2100 WEST ATLANTIC BLDG**
2100 W ATLANTIC BLVD
POMPANO BEACH, FLORIDA 33069Job Number: 24109.01
File name:
Issued Date: 04-23-2025
Drawn by: A.S
Checked by: T.R.

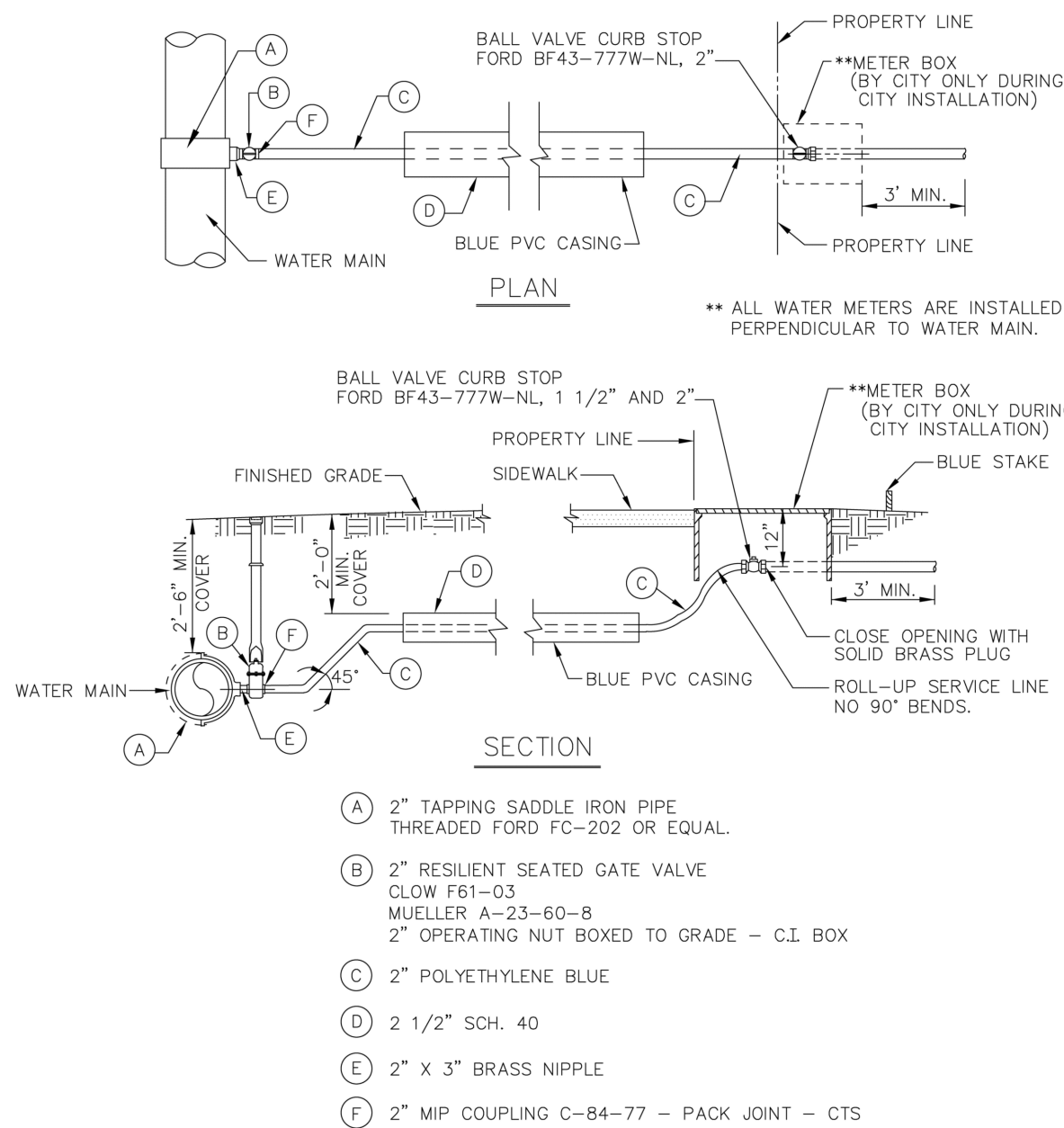
SHEET NAME

**WATER &
SEWER
DETAILS**

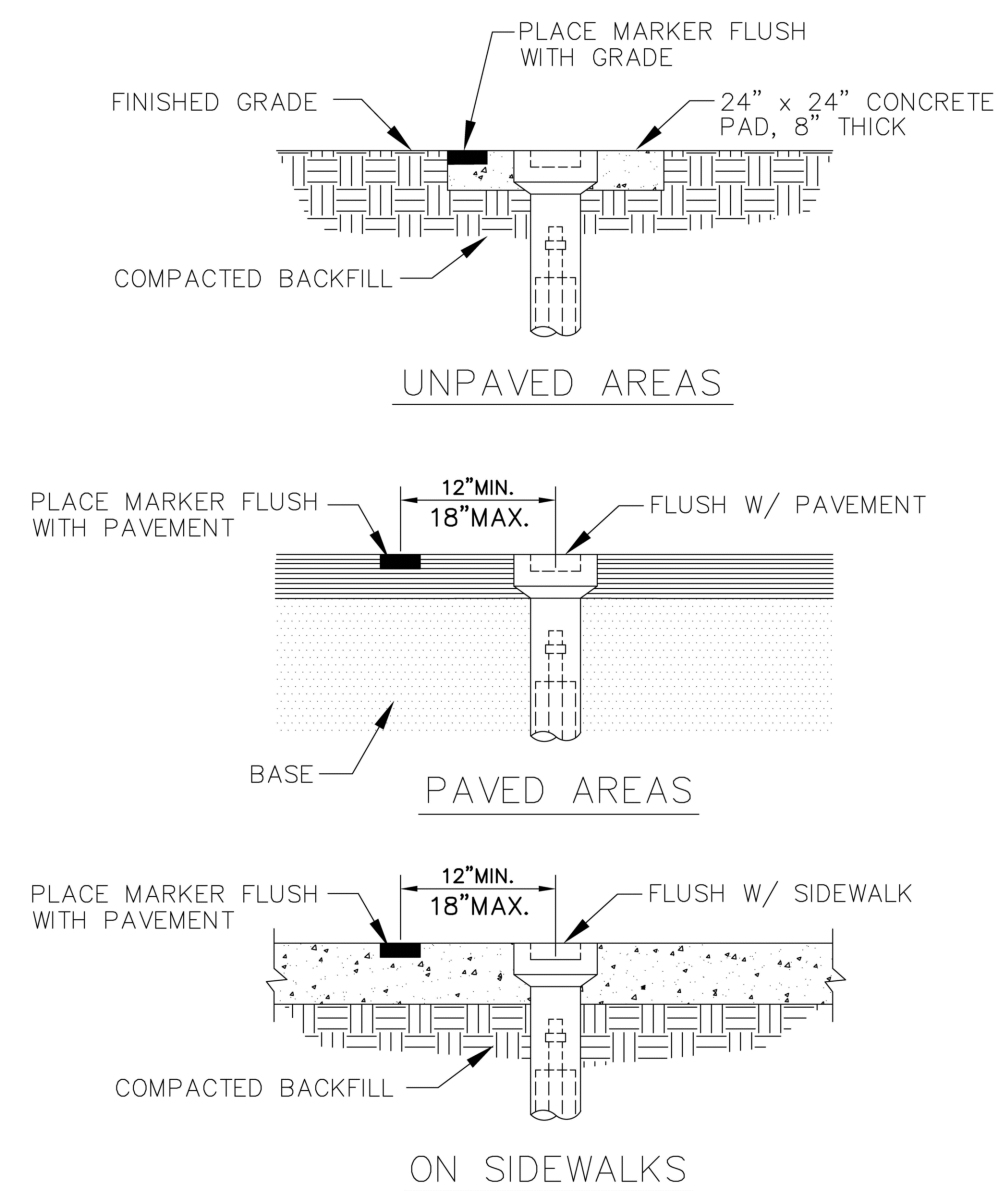
SHEET NUMBER

C-3.1**BACKFLOW PREVENTER**USE MEGALUGS AT ALL PIPE JOINTS 3" AND LARGER
PLEASE SEE METER INSTALL DIMENSION LIST ON STANDARD NO. 106-4
SMALL UNITS UNI-STRUT SUPPORT**ENGINEERING STANDARDS 2022**

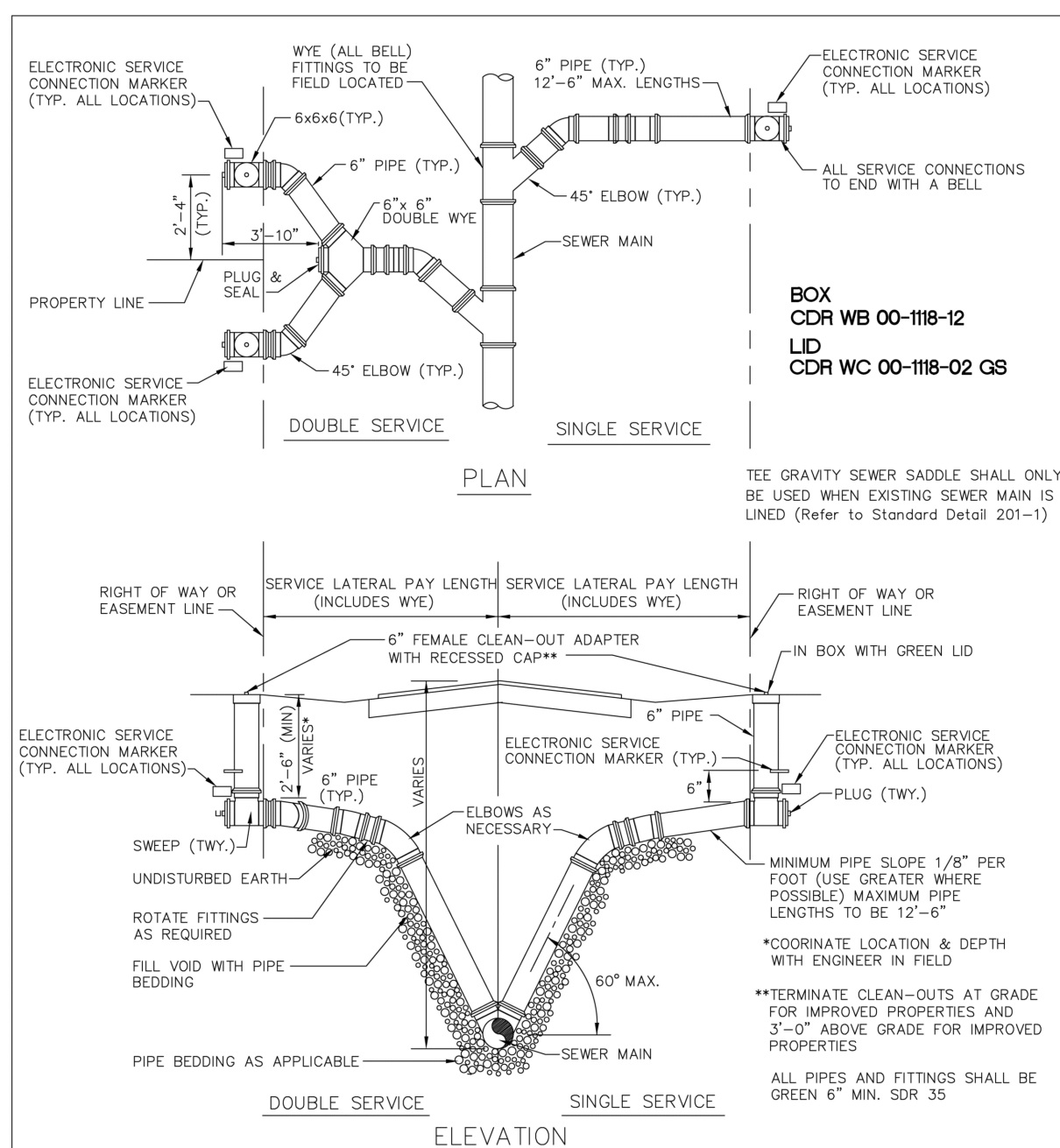
REVISIONS		ENGINEERING DIVISION CITY OF POMPAÑO BEACH	BACKFLOW PREVENTER	DATE: MAY 2022 DWG. NO. 106-1
BY	DATE			
T.W.	04-2008	SCALE: N.T.S.		
S.S.	03-2009			
S.S.	11-2012			
S.S.	01-2013			

**TYPICAL 1 1/2" AND 2" WATER SERVICE****ENGINEERING STANDARDS 2022**

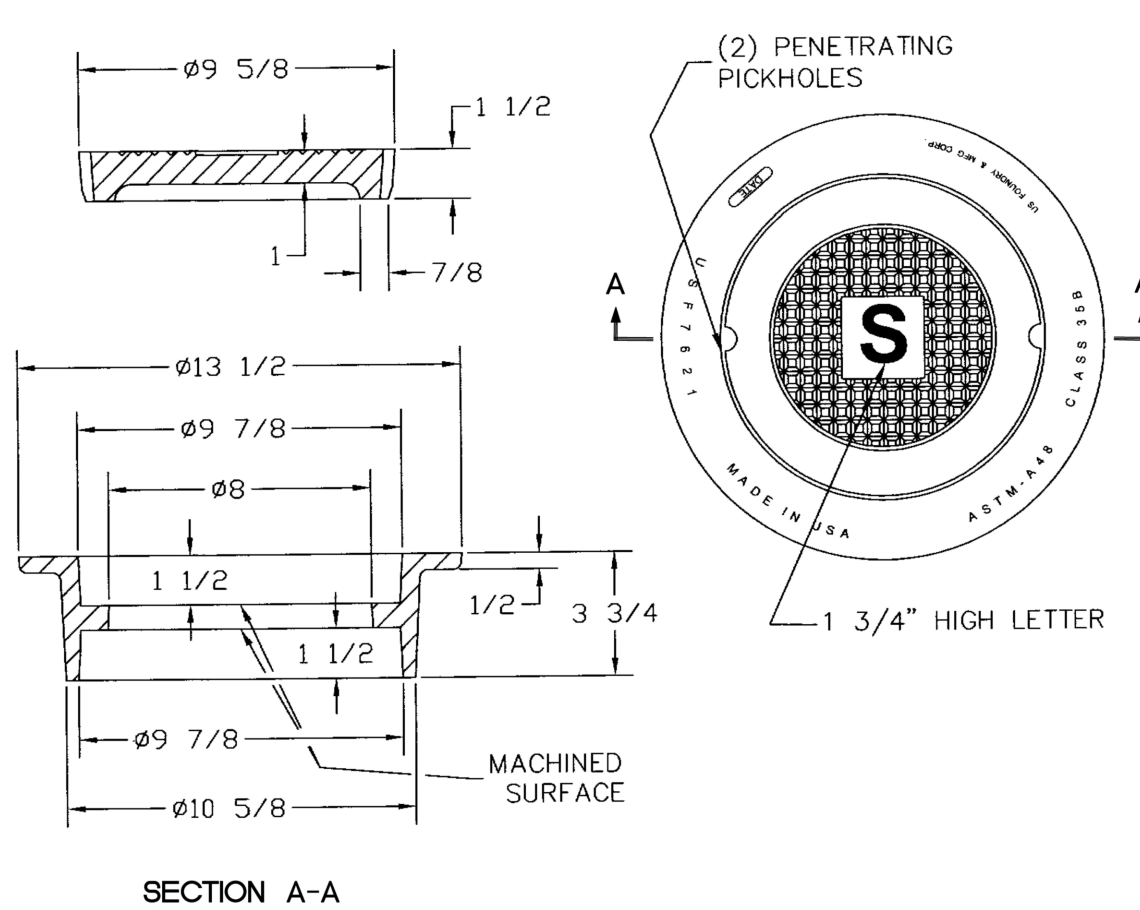
REVISIONS		ENGINEERING DIVISION CITY OF POMPAÑO BEACH	TYPICAL 2" WATER SERVICE	DATE: APRIL 2022 DWG. NO. 107-2
BY	DATE			
S.S.	05-2011	SCALE: N.T.S.		
S.S.	05-2012			
S.S.	11-2018			
A.S.	08-2021			

**VALVE BOX SETTINGS****ENGINEERING STANDARDS 2022**

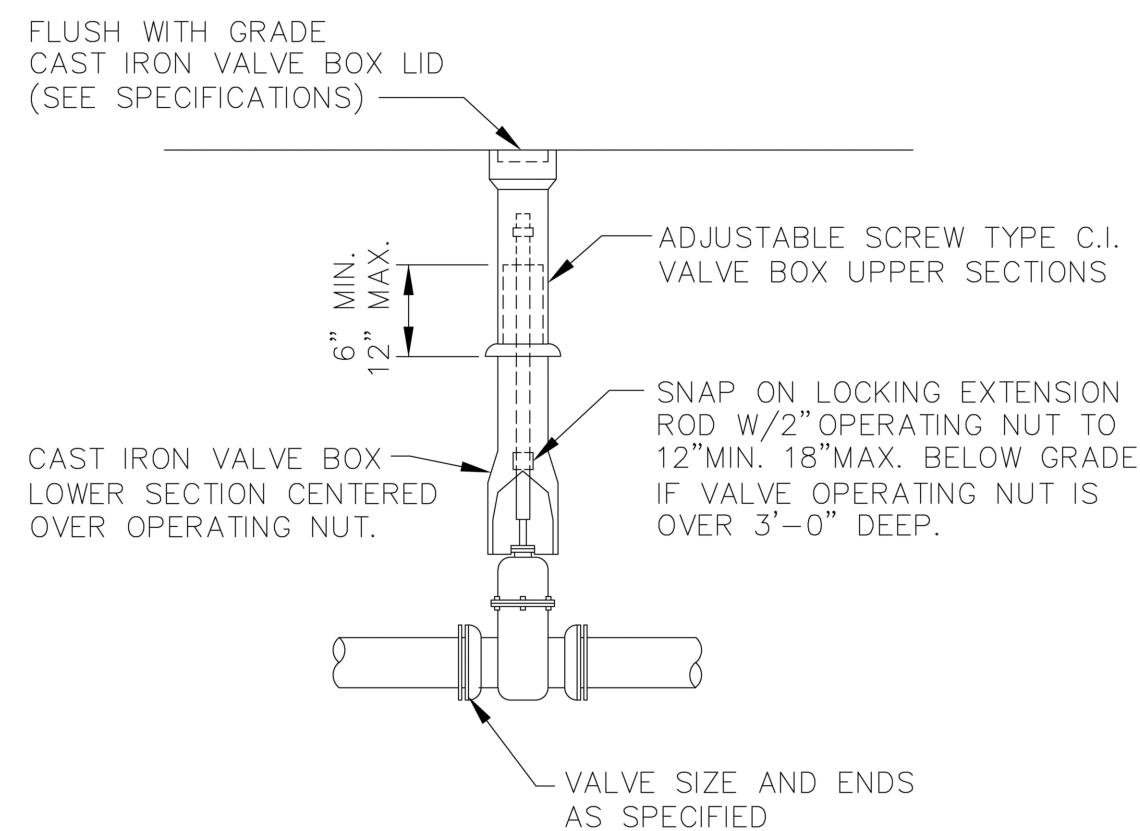
REVISIONS		ENGINEERING DIVISION CITY OF POMPAÑO BEACH	VALVE BOX SETTINGS	DATE: MAY 2022 DWG. NO. 102-1
BY	DATE			
S.S.	04-2005	SCALE: N.T.S.		

**SERVICE LATERALS WITH RISERS****ENGINEERING STANDARDS 2022**

REVISIONS		ENGINEERING DIVISION CITY OF POMPAÑO BEACH	SERVICE LATERALS	DATE: JUNE 2022 DWG. NO. 200-1
BY	DATE			
T.W.	11-2007	SCALE: N.T.S.		
S.S.	01/27/12			
S.S.	07/10/12			
S.S.	02/05/16			

**SEWER BOX AND COVER - HEAVY TRAFFIC****ENGINEERING STANDARDS 2022**

REVISIONS		ENGINEERING DIVISION CITY OF POMPAÑO BEACH	SEWER BOX AND COVER HEAVY TRAFFIC	DATE: JUNE 2022 DWG. NO. 210-3
BY	DATE			
S.S.	12/06/18	SCALE: N.T.S.		

**GATE OR PLUG VALVE SETTING**

USE MEGALUGS AT ALL PIPE JOINTS

ALL D.I.P. TO BE PAINTED
BLUE ON TOP HALF OF PIPE.**ENGINEERING STANDARDS 2022**

REVISIONS		ENGINEERING DIVISION CITY OF POMPAÑO BEACH	GATE OR PLUG VALVE SETTINGS	DATE: MAY 2022 DWG. NO. 103-1
BY	DATE			
S.S.	04-2005	SCALE: N.T.S.		
T.W.	11-2007			

This item has been digitally signed and sealed by
John E Flynn, PE on the date adjacent to the seal.Printed copies of this document are not
considered signed and sealed and the signature
must be verified on any electronic copies.**GRACE
ENGINEERING**
Civil Engineering Consultants17110 SW 64th Court
Southwest Ranches, Florida 33331GraceEngineeringLLC@gmail.com
754.200.4534

JOHN E. FLYNN, P.E.
Florida License No. 63316
GRACE ENGINEERING, LLC
Certificate of Authorization No. 23280

PZ25-12000021

07.16.2025